



E & A CONSULTING GROUP, INC.

Engineering Answers

10909 Mill Valley Road, Suite 100 • Omaha, NE 68154-3950
P 402.895.4700 • F 402.895.3599
www.eacg.com

Dear Homeowner:

The SID has contracted concrete work to be done on the streets in your SID. A contractor will be on site to do work which includes removing the existing concrete that is damaged and replacing it with new pavement.

Throughout the course of this project, there could be some minimal damage done to yards and or sprinkler systems. The contractor that is on site will be responsible for replacing any damaged sprinkler lines and/or heads. They will also be replacing any sod that is torn up while on site. Once the new sod is laid, it will be the responsibility of the homeowner at each lot to water the new sod until it has re-established itself.

Before starting the work on site, each contractor must put in a call and have all the utilities in the area located. You might notice some areas in your yard that have been flagged and/or spray painted. This does not indicate the area in which they will be working. It is just to give them an idea of what kind of utilities are in the area that could possibly be hit while the contractor is on site working.

All work that is completed in public Right-of-Way and follow City of Omaha and Sarpy County specifications.

The work in your SID should not take longer than 30 days to complete. Please let me know if you have any questions or concerns on this at all.

Thank You,

A handwritten signature in black ink that reads "Katlyn Bradfield". The signature is written in a cursive, flowing style.

Katlyn Bradfield

Construction Administrative Technician

Engineering Answers...to improve our communities

E & A Consulting Group, Inc.

10909 Mill Valley Road, Suite 100 • Omaha, NE 68154

402.895.4700 (o)

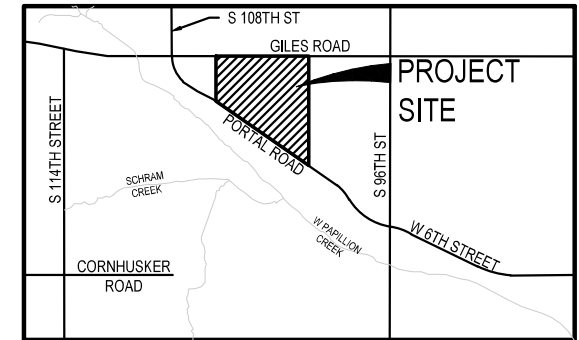
eacg.com



PORTAL RIDGE

2023 STREET RECONSTRUCTION

SID NO. 276
SARPY COUNTY, NEBRASKA



VICINITY MAP

APPROXIMATE BID QUANTITIES

ITEM	DESCRIPTION	QUANTITY	UNIT
1	CONCRETE PAVEMENT REPAIR, LARGE AREA	336	SY
2	CONCRETE PAVEMENT REPAIR, SMALL AREA	1,190	SY
3	FULL DEPTH SAW CUT EXISTING PAVEMENT	3,446	LF
4	ADJUST WATER VALVE TO GRADE	2	EA
5	ADJUST MANHOLE TO GRADE	6	EA
6	REMOVE AND REPLACE PCC SIDEWALK	470	SF
7	REMOVE AND REPLACE PCC CURB RAMP	252	SF
8	CONSTRUCT PCC CURB RAMP	50	SF
9	CONSTRUCT DETECTABLE WARNING PANEL (5 locations)	40	SF
10	REMOVE AND REPLACE FAULTY SUBGRADE	25	TN



INDEX OF SHEETS

SHEET NO.	DESCRIPTION
1	COVER
2	SOUTHWEST
3	NORTH
4	SOUTHEAST
5	TOTAL QUANTITIES
6	COMPOSITE MAP



APPLICANT

SID # 276
Steven Slezak, Chairman
11440 West Center Road, Ste. C
Omaha, NE 68144
P: 402.334.0700
F: 402.334.0815
mjohnson@fdjlaw.com

DESIGNER

E & A Consulting Group, Inc
Teresa Wooten, P.E.
10909 Mill Valley Road, Suite 100
Omaha, NE 68154
P: 402.895.4700
F: 402.895.3599
twooten@eacg.com

INSPECTOR

E & A Consulting Group, Inc
Randall L. Pierce, P.E.
10909 Mill Valley Road, Suite 100
Omaha, NE 68154
P: 402.895.4700
F: 402.895.3599
rpierce@eacg.com

CONTRACTOR

E & A CONSULTING GROUP, INC.
Engineering • Planning • Environmental & Field Services
10909 Mill Valley Road, Suite 100 • Omaha, NE 68154
Phone: 402.895.4700 • Fax: 402.895.3599
www.eacg.com
State of NE Certificate of Authorization #C40008

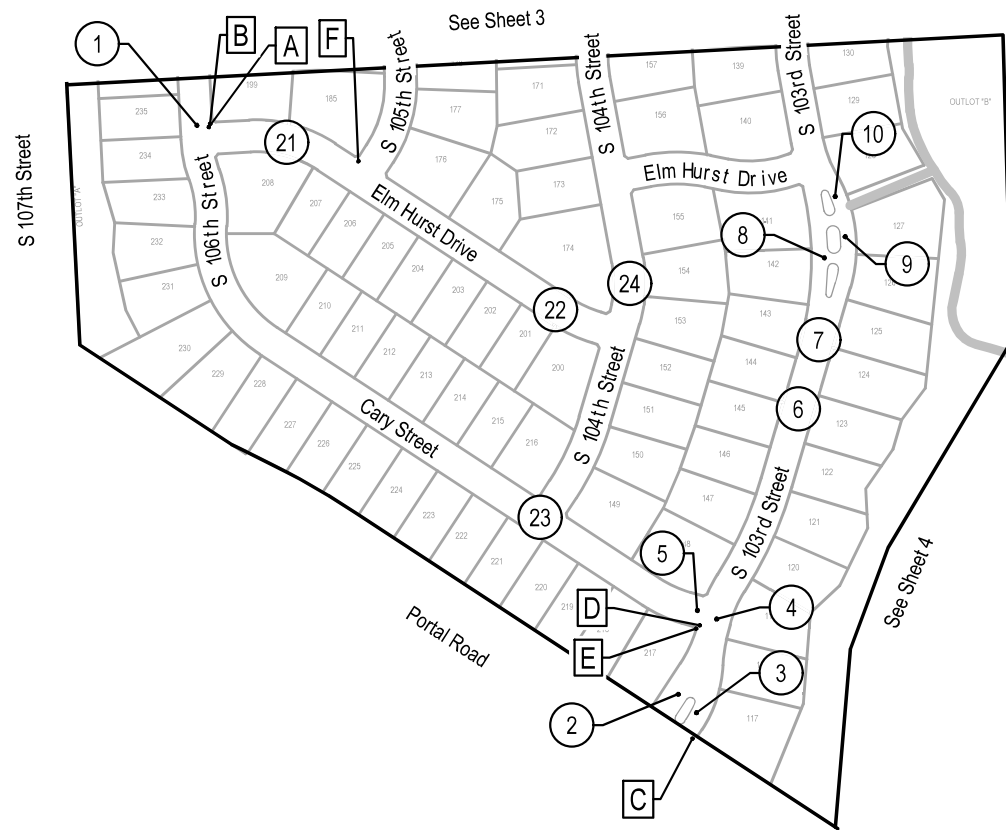
**PORTAL RIDGE
2023 STREET
RECONSTRUCTION**
SID 276
SARPY COUNTY, NEBRASKA

COVER

Revisions	Date	Description
1	9/28/2023	TAM
2	JME	JME

Proj No: P2005054012
Date: 9/28/2023
Designed By: TAM
Drawn By: JME
Scale: 1" = 400'
Sheet: 1 of 6

9/29/2023 8:47 AM K:\Projects\2005054012\Engineering\CAD Files\paving\Portal Ridge 2023 Street Reconstruction-000.dwg
Jessica Brown

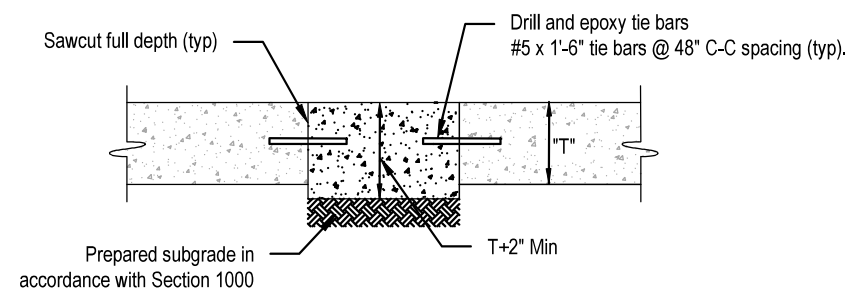


LEGEND



2023 STREET RECONSTRUCTION									
AREA NO.	NO. POURS	SAW CUT L.F.	CURB L.F.	WIDTH	X	LENGTH	LARGE AREA EST S.Y.	SMALL AREA EST S.Y.	NOTES
1	1	30	13	12.5	x	8.5		11.8	
2	1	140		8.0	x	45.0		40.0	
				6.5	x	10.5		7.6	
3	1	24	11	7.5	x	10.5		8.8	
4	2	74	4	25.0	x	14.0		38.9	
5	1	63		21.0	x	10.5		24.5	
6	1	156		70.0	x	8.0	62.2		
7	1	44		11.5	x	10.5		13.4	
8	1	71	14	39.0	x	3.5		15.2	Curb Inlet Throat
9	1	26	30	15.0	x	13.0		21.7	
10	1	26	30	15.0	x	13.0		21.7	
21	2	50	27	25.0	x	13.5		37.5	
22	1	124		54.0	x	8.0		48.0	
23	1	41	8	7.5	x	16.5		13.8	Adjust Manhole
24	1	31	14	13.5	x	8.5		12.8	

2023 STREET RECONSTRUCTION						
AREA NO.	TYPE	APPROX. DIMEN.			EST S.F.	NOTES
A	Curb Ramp	20	x	4	80.0	ADA Plate - Cast Iron
B	Sidewalk	20	x	4	80.0	
C	Sidewalk	10	x	4	40.0	
D	Curb Ramp	8.5	x	4	34.0	
E	Sidewalk	8.5	x	4	34.0	
F	Curb Ramp	6.5	x	4	26.0	ADA Plate - Cast Iron



SMALL AREA CONCRETE PAVEMENT REPAIR DETAIL
 NOT TO SCALE



E & A CONSULTING GROUP, INC.
 Engineering • Planning • Environmental & Field Services
 10809 Mill Valley Road, Suite 100 • Omaha, NE 68154
 Phone: 402.255.4700 • Fax: 402.255.3599
 www.eandagroup.com
 State of NE Certificate of Authorization #C40008

E & A CONSULTING GROUP, INC.
 Engineering Answers

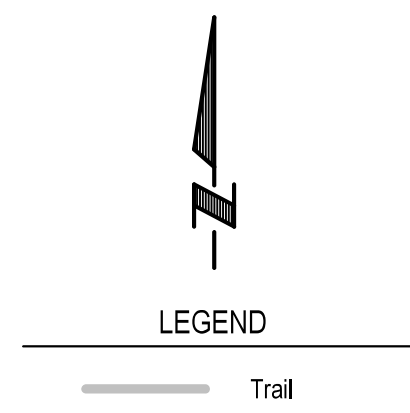
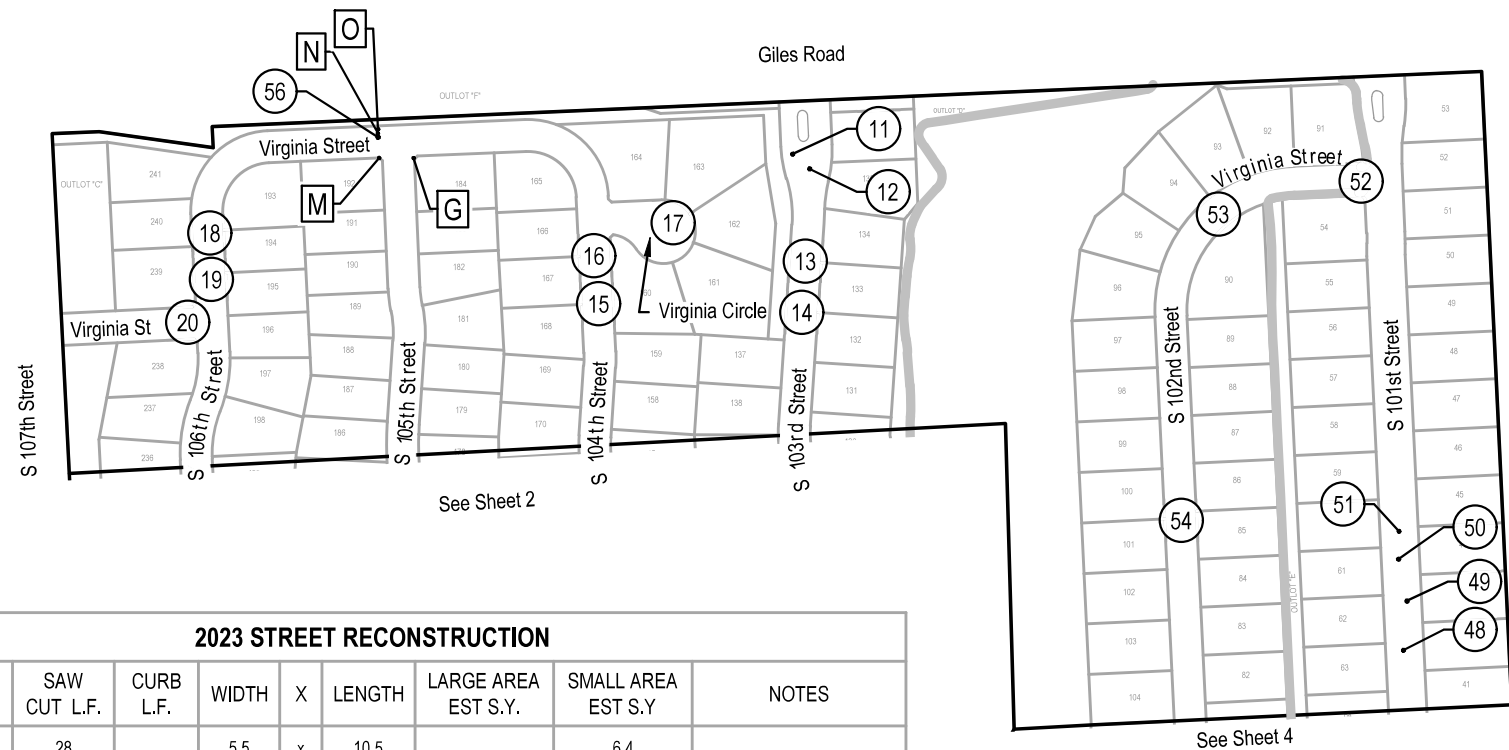
PORTAL RIDGE 2023 STREET RECONSTRUCTION
 SID 276
 SAPPY COUNTY, NEBRASKA

SOUTHWEST

Revisions	Date	Description
1	9/28/2023	

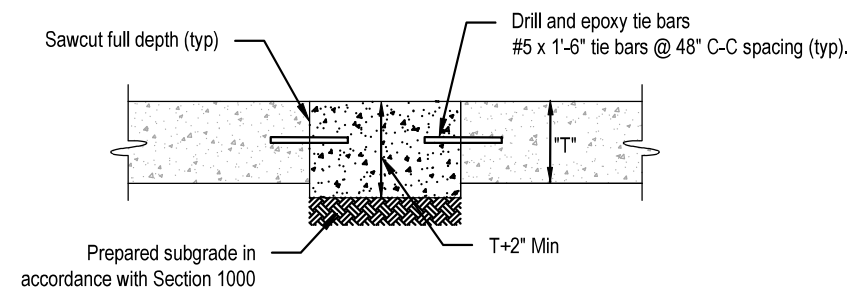
Proj No: P2005054012
 Date: 9/28/2023
 Designed By: TMM
 Drawn By: JMB
 Scale: 1" = 30'
 Sheet: 2 of 6

9/29/2023 8:47 AM
 K:\Projects\2005\054\p12\Engineering\CAD Files\Paving\Portal Ridge 2023 Street Reconstruction-000.dwg
 Jessica Brown



2023 STREET RECONSTRUCTION									
AREA NO.	NO. POURS	SAW CUT L.F.	CURB L.F.	WIDTH	X	LENGTH	LARGE AREA EST S.Y.	SMALL AREA EST S.Y.	NOTES
11	1	28		5.5	x	10.5		6.4	
12	1	68		6.5	x	10.5		7.6	Adjust Manhole
				15.0	x	8.0		13.3	
13	1	76		30.0	x	8.0		26.7	
14	1	32	15	15.0	x	8.5		14.2	
15	1	97		40.0	x	8.5		37.8	
16	1	41		8.5	x	26.0		24.6	
17	1	67		13.5	x	9.5		14.3	Adjust Manhole
				10.5	x	8.5		9.9	
18	1	93	14	13.5	x	16.5		24.8	
				13.5	x	8.0		12.0	
19	1	36	14	13.5	x	8.5		12.8	
20	1	28	12	10.5	x	6.5		7.6	
48	1	72		24.0	x	12.0		32.0	
49	1	104		40.0	x	12.0		53.3	
50	1	48	7	15.0	x	12.5		20.8	
51	1	54		15.0	x	12.0		20.0	
52	1	31	14	13.5	x	8.5		12.8	
53	1	43		13.5	x	8.0		12.0	
54	1	50	10	13.5	x	16.5		24.8	
56	1	37	10	10.0	x	8.3		9.2	Curb Drop for Ramp

2023 STREET RECONSTRUCTION					
AREA NO.	TYPE	APPROX. DIMEN.		EST S.F.	NOTES
G	Sidewalk	17.5	x 4	70.0	Water Valve
M	Curb Ramp	4.75	x 5.25	24.9	ADA Plate - Cast Iron
N	Curb Ramp	4.75	x 5.25	24.9	ADA Plate - Cast Iron
O	Sidewalk	17.5	x 4	70.0	



SMALL AREA CONCRETE PAVEMENT REPAIR DETAIL
NOT TO SCALE



E & A CONSULTING GROUP, INC.
Engineering • Planning • Environmental & Field Services
10809 Mill Valley Road, Suite 100 • Omaha, NE 68154
Phone: 402.255.4700 • Fax: 402.955.2599
www.eacg.com
State of NE Certificate of Authorization #C40008

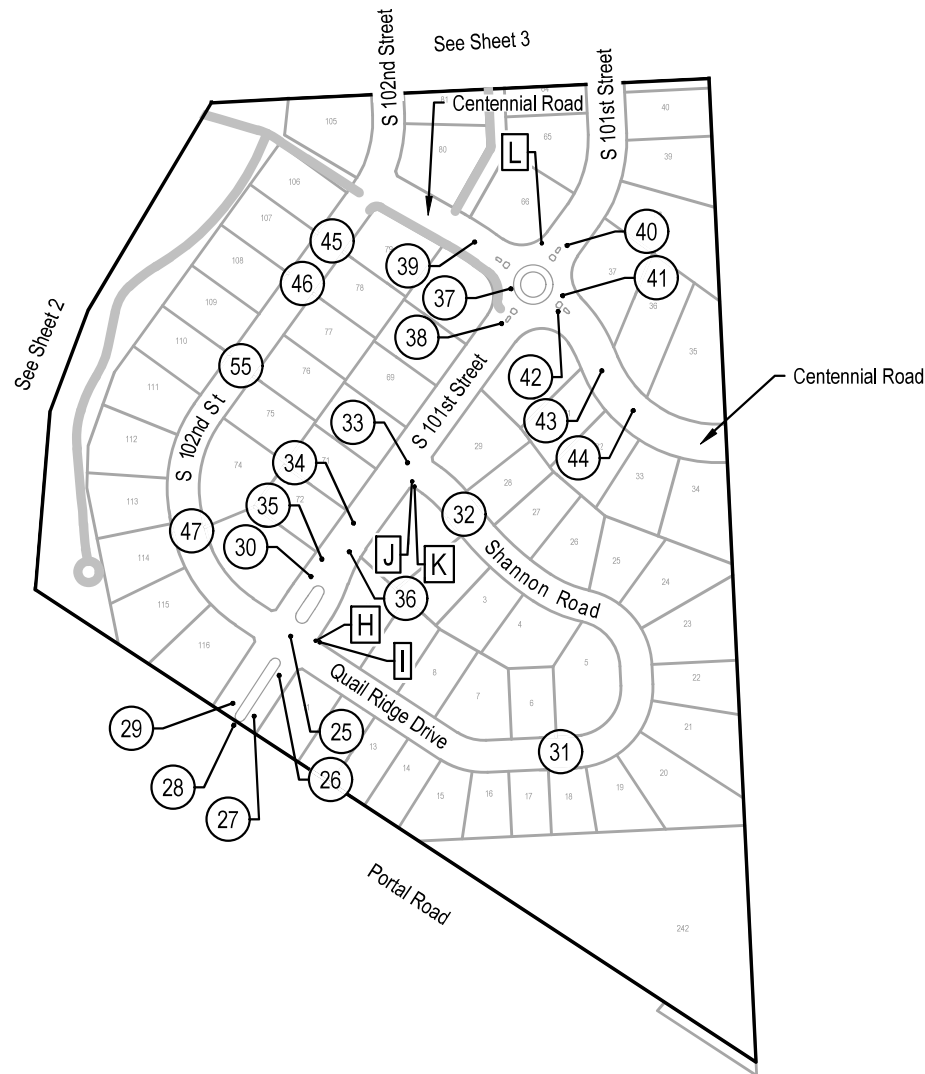
E & A CONSULTING GROUP, INC.
Engineering Answers

**PORTAL RIDGE
2023 STREET
RECONSTRUCTION**
SID 276
SARPY COUNTY, NEBRASKA

NORTH

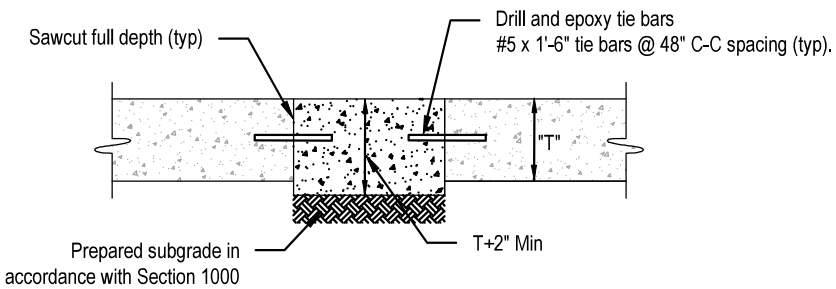
Revisions	Date	Description
1	9/26/2023	

Proj No: P2023054012
Date: 9/26/2023
Designed By: TMM
Drawn By: JMB
Scale: 1" = 300'
Sheet: 3 of 6



LEGEND

— Trail



SMALL AREA CONCRETE PAVEMENT REPAIR DETAIL
 NOT TO SCALE

2023 STREET RECONSTRUCTION					
AREA NO.	TYPE	APPROX. DIMEN.		EST S.F.	NOTES
H	Curb Ramp	5.25	x 6	31.5	Adjust Manhole
I	Sidewalk	17.5	x 4	70.0	Water Valve
J	Curb Ramp	20	x 4	80.0	ADA Plate - Cast Iron
K	Sidewalk	20	x 4	80.0	
L	Sidewalk	6.5	x 4	26.0	Adjust Manhole

2023 STREET RECONSTRUCTION

AREA NO.	NO. POURS	SAW CUT L.F.	CURB L.F.	WIDTH	X	LENGTH	LARGE AREA EST S.Y.	SMALL AREA EST S.Y.	NOTES
25	1	151	22	54.0	x	8.0	48.0		Adjust Manhole
				13.5	x	13.0	19.5		
26	1	30	24	12.0	x	15.0		20.0	
27	1	30	4	14.0	x	3.5		5.4	Curb Inlet Throat
28	1	20	10	3.5	x	8.0		3.1	
29	1	47	14	13.5	x	16.5		24.8	
30	1	44	10	13.5	x	13.5		20.3	
31	1	34	10	13.5	x	8.0		12.0	
32	1	81	8	27.0	x	8.5		25.5	
				6.0	x	13.5		9.0	
33	1	104	10	27.0	x	12.5		37.5	
				12.0	x	10.5		14.0	
34	1	65	10	25.0	x	12.5		34.7	
35	1	30	21	20.5	x	4.5		10.3	Curb Inlet Throat
36	1	25	9	9.0	x	8.0		8.0	
37	1	60		14.0	x	6.0		9.3	
38	1	80		3.0	x	8.0		2.7	
				12.0	x	14.0		18.7	
				12.0	x	28.0		37.3	
39	1	107	42	42.0	x	12.5	58.3		
				14.0	x	12.0	18.7		
40	1	117	40	12.5	x	40.0	55.6		
				10.5	x	10.5	12.3		
41	1	50	25	12.5	x	25.0		34.7	
42	1	60	23	12.5	x	15.0		20.8	
43	1	68	5	24.5	x	12.0		32.7	
44	2	84	20	37.0	x	15.0	61.7		
45	1	43		13.5	x	8.0		12.0	
46	1	70		27.0	x	8.0		24.0	
47	1	43		13.5	x	8.0		12.0	
55	1	98	16	27.0	x	8.5		25.5	
				27.0	x	8.0		24.0	



E & A CONSULTING GROUP, INC.
 Engineering • Planning • Environmental & Field Services
 10809 Mill Valley Road, Suite 100 • Omaha, NE 68154
 Phone: 402.255.4700 • Fax: 402.255.3599
 www.eandagroup.com
 State of NE Certificate of Authorization #CA0008

E & A CONSULTING GROUP, INC.
 Engineering Answers

**PORTAL RIDGE
 2023 STREET
 RECONSTRUCTION**
 SID 276
 SAPPY COUNTY, NEBRASKA

SOUTHEAST

Proj No: P202305054012
 Date: 9/28/2023
 Designed By: TMM
 Drawn By: JMB
 Scale: 1" = 300'
 Sheet: 4 of 6

9/29/2023 8:47 AM K:\Projects\2005\054012\Engineering\CAD Files\ paving\Portal Ridge 2023 Street Reconstruction-000.dwg
 Jessica Brown

2023 STREET RECONSTRUCTION									
AREA NO.	NO. POURS	SAW CUT L.F.	CURB L.F.	WIDTH	X	LENGTH	LARGE AREA EST S.Y.	SMALL AREA EST S.Y.	NOTES
1	1	30	13	12.5	x	8.5		11.8	
2	1	140		8.0	x	45.0		40.0	
				6.5	x	10.5		7.6	
3	1	24	11	7.5	x	10.5		8.8	
4	2	74	4	25.0	x	14.0		38.9	
5	1	63		21.0	x	10.5		24.5	
6	1	156		70.0	x	8.0	62.2		
7	1	44		11.5	x	10.5		13.4	
8	1	71	14	39.0	x	3.5		15.2	Curb Inlet Throat
9	1	26	30	15.0	x	13.0		21.7	
10	1	26	30	15.0	x	13.0		21.7	
11	1	28		5.5	x	10.5		6.4	
12	1	68		6.5	x	10.5		7.6	Adjust Manhole
				15.0	x	8.0		13.3	
13	1	76		30.0	x	8.0		26.7	
14	1	32	15	15.0	x	8.5		14.2	
15	1	97		40.0	x	8.5		37.8	
16	1	41		8.5	x	26.0		24.6	
17	1	67		13.5	x	9.5		14.3	Adjust Manhole
				10.5	x	8.5		9.9	
18	1	93	14	13.5	x	16.5		24.8	
				13.5	x	8.0		12.0	
19	1	36	14	13.5	x	8.5		12.8	
20	1	28	12	10.5	x	6.5		7.6	
21	2	50	27	25.0	x	13.5		37.5	
22	1	124		54.0	x	8.0		48.0	
23	1	41	8	7.5	x	16.5		13.8	Adjust Manhole
24	1	31	14	13.5	x	8.5		12.8	
25	1	151	22	54.0	x	8.0	48.0		Adjust Manhole
				13.5	x	13.0	19.5		
26	1	30	24	12.0	x	15.0		20.0	
27	1	30	4	14.0	x	3.5		5.4	Curb Inlet Throat
28	1	20	10	3.5	x	8.0		3.1	
29	1	47	14	13.5	x	16.5		24.8	
30	1	44	10	13.5	x	13.5		20.3	
31	1	34	10	13.5	x	8.0		12.0	
32	1	81	8	27.0	x	8.5		25.5	
				6.0	x	13.5		9.0	

2023 STREET RECONSTRUCTION									
AREA NO.	NO. POURS	SAW CUT L.F.	CURB L.F.	WIDTH	X	LENGTH	LARGE AREA EST S.Y.	SMALL AREA EST S.Y.	NOTES
33	1	104	10	27.0	x	12.5		37.5	
				12.0	x	10.5		14.0	
34	1	65	10	25.0	x	12.5		34.7	
35	1	30	21	20.5	x	4.5		10.3	Curb Inlet Throat
36	1	25	9	9.0	x	8.0		8.0	
37	1	60		14.0	x	6.0		9.3	
38	1	80		3.0	x	8.0		2.7	
				12.0	x	14.0		18.7	
				12.0	x	28.0		37.3	
39	1	107	42	42.0	x	12.5	58.3		
				14.0	x	12.0	18.7		
40	1	117	40	12.5	x	40.0	55.6		
				10.5	x	10.5	12.3		
41	1	50	25	12.5	x	25.0		34.7	
42	1	60	23	12.5	x	15.0		20.8	
43	1	68	5	24.5	x	12.0		32.7	
44	2	84	20	37.0	x	15.0	61.7		
45	1	43		13.5	x	8.0		12.0	
46	1	70		27.0	x	8.0		24.0	
47	1	43		13.5	x	8.0		12.0	
48	1	72		24.0	x	12.0		32.0	
49	1	104		40.0	x	12.0		53.3	
50	1	48	7	15.0	x	12.5		20.8	
51	1	54		15.0	x	12.0		20.0	
52	1	31	14	13.5	x	8.5		12.8	
53	1	43		13.5	x	8.0		12.0	
54	1	50	10	13.5	x	16.5		24.8	
55	1	98	16	27.0	x	8.5		25.5	
				27.0	x	8.0		24.0	
56	1	37	10	10.0	x	8.3		9.2	Curb Drop for Ramp

2023 STREET RECONSTRUCTION				
AREA NO.	TYPE	APPROX. DIMEN.	EST S.F.	NOTES
A	Curb Ramp	20 x 4	80.0	ADA Plate - Cast Iron
B	Sidewalk	20 x 4	80.0	
C	Sidewalk	10 x 4	40.0	
D	Curb Ramp	8.5 x 4	34.0	
E	Sidewalk	8.5 x 4	34.0	
F	Curb Ramp	6.5 x 4	26.0	ADA Plate - Cast Iron
G	Sidewalk	17.5 x 4	70.0	Water Valve
H	Curb Ramp	5.25 x 6	31.5	Adjust Manhole
I	Sidewalk	17.5 x 4	70.0	Water Valve
J	Curb Ramp	20 x 4	80.0	ADA Plate - Cast Iron
K	Sidewalk	20 x 4	80.0	
L	Sidewalk	6.5 x 4	26.0	Adjust Manhole
M	Curb Ramp	4.75 x 5.25	24.9	ADA Plate - Cast Iron
N	Curb Ramp	4.75 x 5.25	24.9	ADA Plate - Cast Iron
O	Sidewalk	17.5 x 4	70.0	



E & A CONSULTING GROUP, INC.
 Engineering • Planning • Environmental & Field Services
10809 Mill Valley Road, Suite 100 • Omaha, NE 68154
 Phone: 402.255.4700 • Fax: 402.255.2599
 www.eandagroup.com
 State of NE Certificate of Authorization #C240008

E & A CONSULTING GROUP, INC.
 Engineering Answers

**PORTAL RIDGE
 2023 STREET
 RECONSTRUCTION**
SID 276
 SAPPY COUNTY, NEBRASKA

TOTAL QUANTITIES

Proj No: P2005054012
 Date: 9/28/2023
 Designed By: TMM
 Drawn By: JMB
 Scale: N/A
 Sheet: 5 of 6

Revisions
 Date Description

9/29/2023 8:47 AM K:\Projects\2005\054\p12\Engineering\CAD Files\Paving\Portal Ridge 2023 Street Reconstruction-000.dwg
 Jessica Brown



LEGEND

— Trail



Revisions	Date	Description
1	9/26/2023	TAM
2		JMB

Proj No: P2023054012
 Date: 9/26/2023
 Designed By: TAM
 Drawn By: JMB
 Scale: 1" = 300'
 Sheet: 6 of 6

PORTAL RIDGE
 2023 STREET
 RECONSTRUCTION
 SID 276
 SAPPY COUNTY, NEBRASKA



E & A CONSULTING GROUP, INC.
 Engineering • Planning • Environmental & Field Services
 10809 Mill Valley Road, Suite 100 • Omaha, NE 68154
 Phone: 402.255.4700 • Fax: 402.255.2599
 www.eaegroup.com
 State of NE Certificate of Authorization #C40008